



Scheda tecnica indumento/Garment technical data sheet.04531B.00


Identificazione articolo/Item identification					
Cod. comm.le Industrial Starter/ IS commercial item code:	04531B	Cod. art. fornitore/ Supplier item code*:	DK 2283	Cod. fornitore/ Supplier code:	000535
Cod. colore Industrial Starter/ Industrial Starter colour code:	040 (blu/blue)	<input checked="" type="checkbox"/>	Articolo del catalogo/Item from catalogue		
	083 (grigio nero/ grey black)	<input type="checkbox"/>	Articolo personalizzato/Customized item		
Nome articolo/Item name:	Giubbino "WISE" / "WISE" jacket				

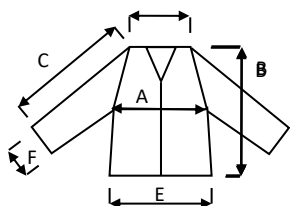
Descrizione tecnica dell'articolo/Technical item description			
	Composizione/ Fabric composition	Colore/colour (Pantone)	Peso del tessuto/ Fabric weight [g/m ²]
Tessuto principale / Shell main fabric :	100% poliestere doobby con membrana TPU W/P 5.000 mm MVP 1.000 / 100% polyester doobby with TPU membrane W/P 5.000 mm MVP 1.000	Grigio - nero – rosso / Grey – black – red Blu – arancio / Blue - orange	240 +/- 5%
Fodera / Lining :	100% poliestere taffeta / 100% taffeta polyester	Nero / Black	55 +/- 5%
Imbottitura / Padding :	100% poliestere trapuntato / 100% polyester quilted	Bianco / White	120 +/- 5% (Corpo / Body) 80 +/- 5% (Manica / Sleeve)
Accessori/Accessories:	Maniche staccabili, cappuccio a scomparsa, quattro tasche frontali ed un ampio tascone interno, inserti in tessuto riflettente / Detachable sleeves , concealed hood, four front pockets and one inner big pocket , reflective fabric inserts		
Loghi e ricami/ Logos & embroideries:			
Taglie/Sizes:	S, M, L, XL, XXL, XXXL, 4XL, 5XL		
Imballo/Packages:	n. 1 pz per paper box – n. 6 paper box per cartone / n. 1 piece per paper box - n. 6 paper boxes per export carton		
Istruzioni lavaggio/ Care label:			

Conformità alle norme CE/Conformity with EC standards		
Cat.DPI/ PPE Category:	I	Norme CE e livelli di protezione/ EC standards and protection levels: EN ISO 13688:2013 EN 14058:2017 (Rif. Test Report RdP no: 19RT01114 by RITEX *) *Accredia Lab n. 0315 L
Lingue nota Informativa/ Manufacturer's notes languages:	IT,ES,CZ,PL,EN,PT,SK,HU,FR,DE,LT,RS,GR,SI,LV,HR,EE,TR,RO	

Scheda tecnica indumento/Garment technical data sheet.04531B.00

Taglia/Size:	Misure delle taglie/Size measurements [cm]							
	S	M	L	XL	XXL	XXXL	4XL	5XL
A. Torace / Chest:	118	122	126	130	134	138	142	146
B. Lunghezza tot. / Tot. length:	68	70	72	74	76	78	80	82
C. Manica / Sleeves:	65	66	67	68	69	70	71	72
E. Fondo / Bottom:	84	88	92	96	100	104	108	112
F. Polsino / Sleeve opening:	16	18	18	18	20	20	22	22

Disegno e foto/Drawing and photo



EN 14058:2017



Box appendibile / Hanging box

04531D "WISE" al "CUBO" / 04531D "WISE" "CUBE"

n. 6 box assortiti / n. 6 assorted boxes

(1/M, 2/L, 2/XL, 1/XXL)

Altavilla Vic.na (Vi), 10/05/2022

